

Conservation Tracking for the Sonoma-Marín Saving Water Partnership

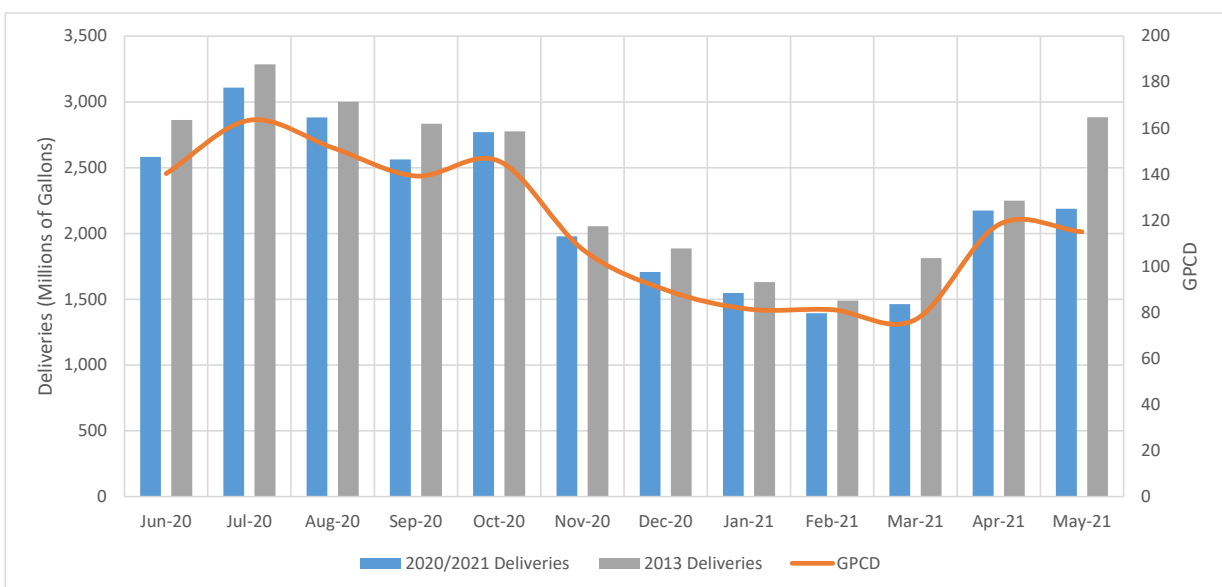
Table 1: May 2021 Water Usage

Water Retailer	Total Deliveries (Gallons)	2013 Benchmark (Gallons)	Relative to 2013 Benchmark
Cal Am	28,267,000	32,939,000	-14%
Cotati	25,091,505	32,454,760	-23%
Healdsburg	60,183,000	73,164,832	-18%
Marin Municipal	713,975,385	918,526,295	-22%
North Marin	209,867,497	346,000,000	-39%
Petaluma	260,029,098	347,235,242	-25%
Rohnert Park	129,690,718	155,000,000	-16%
Santa Rosa	510,562,606	668,278,920	-24%
Sonoma	61,859,554	74,717,732	-17%
Valley of the Moon	75,882,715	97,103,725	-22%
Windsor	112,157,914	138,571,252	-19%
SMSWP Total	2,187,566,991	2,883,991,758	-24%

Table 2: 2021 Year to Date Water Usage

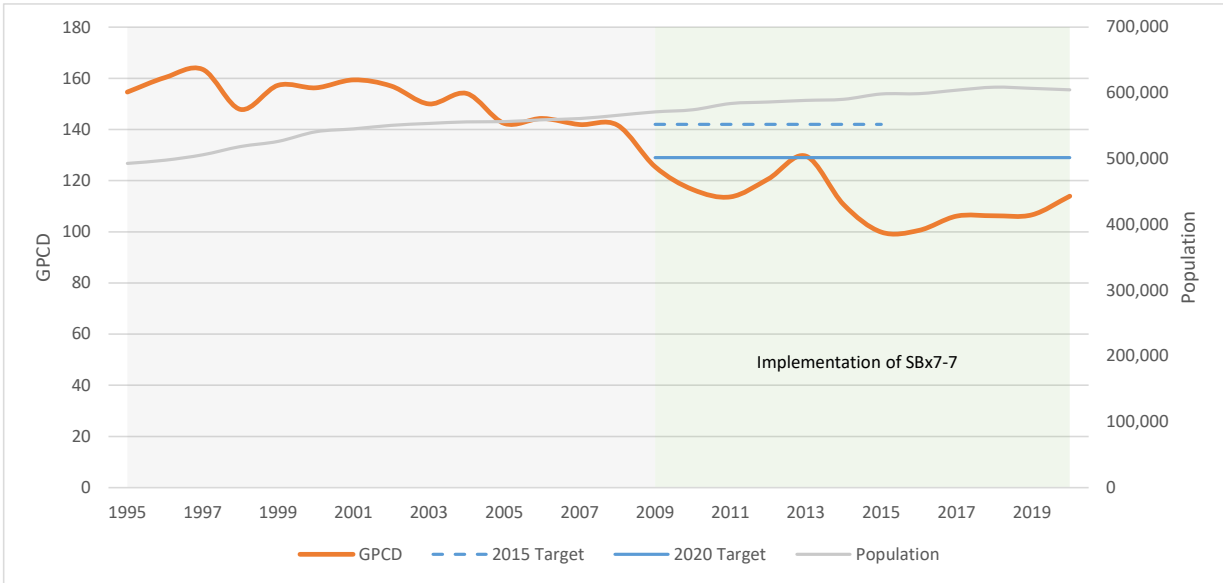
Water Retailer	Total Deliveries (Gallons)	2013 Benchmark (Gallons)	Relative to 2013 Benchmark
Cal Am	103,404,000	107,883,000	-4%
Cotati	99,751,528	117,729,966	-15%
Healdsburg	204,911,000	232,621,404	-12%
Marin Municipal	2,845,976,117	3,236,372,666	-12%
North Marin	896,062,520	1,096,000,000	-18%
Petaluma	968,429,172	1,141,053,756	-15%
Rohnert Park	554,784,887	602,000,000	-8%
Santa Rosa	2,198,027,010	2,470,974,013	-11%
Sonoma	218,786,756	275,181,530	-20%
Valley of the Moon	295,885,221	350,534,673	-16%
Windsor	381,929,957	436,591,057	-13%
SMSWP Total	8,767,948,168	10,066,942,064	-13%

Chart 1: SMSWP Deliveries & GPCD



2013 Benchmark: 2013 was selected as the benchmark per Executive Order B-40-17, which continues the reporting requirements established in Executive Order B-29-15.

Chart 2: SMSWP GPCD Time Series



Note: Chart 2 excludes GPCD and population data for Cal Am and Healdsburg who joined the SMSWP after the establishment of the regional 20x2020 targets displayed on the chart.